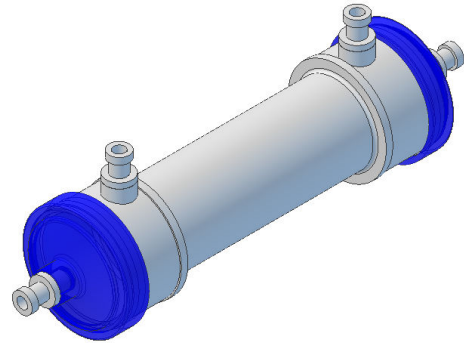
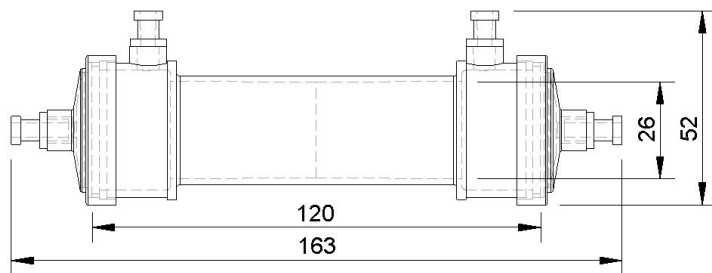


Ultra L – 2500 / 20 kDa PES

Art.-No.: 0510175

Abstract

Ultrafiltration hollow fiber module with approx. 2500 cm² inner surface area.



Membrane

Membrane material:	PES, Polyethersulfone
Geometry (ID/OD):	200 µm/ 280 µm
MWCO / pore size:	20 kDa

Housing

Housing material:	Polycarbonate
Dimensions:	see drawing
ICS connectors:	2 x Female Luer Connectors (Polycarbonate)
ECS connectors:	2 x Female Luer Connectors (Polycarbonate)
Potting material:	Polyurethane

Module

Number of fibers:	4000 ± 100
Package density:	~ 46 %
Active fiber length:	100 ± 3 mm
Inner surface area:	2510 ± 80 cm ²
Outer surface area:	3520 ± 110 cm ²
Intra capillary volume:	~ 15 ml
Extra capillary volume:	~ 28 ml
Max. operating pressure:	1.5 bar

Miscellaneous

Quality control:	100 % Integrity tested (housing + fiber)
Packaging:	On customer request
Gamma Irradiation (25-40kGy):	On customer request

Cautions

Storing:	dry, between 5 – 40 °C
Operating Temperature:	5 – 40 °C
Recommended operation time:	max. 30 days
Application:	single use, not for re-sterilization

Copyright © 2024 Alpha Plan GmbH. All rights reserved.