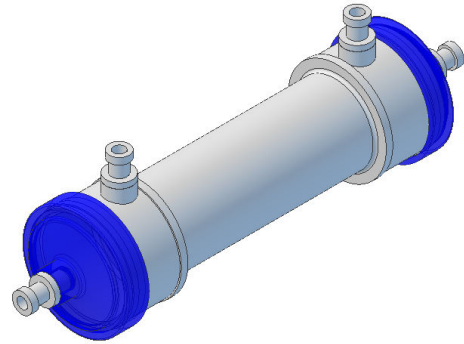
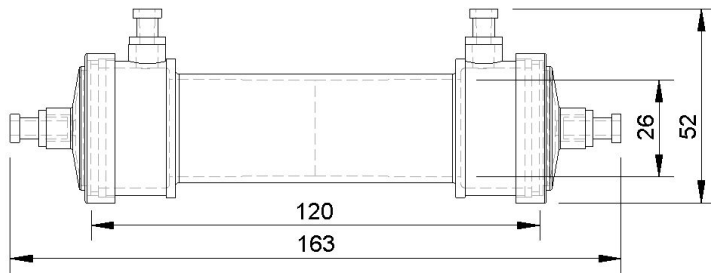


Ultra L – 2500 / 5 kDa

Art.-No.: 0510169

Abstract

Ultrafiltration hollow fiber module with approx. 2500 cm² inner surface area.



Membrane

Membrane material: PS-LF, Polysulfone
Geometry (ID/OD): 200 µm/ 280 µm
MWCO / pore size: 5 kDa

Housing

Housing material: Polycarbonate
Dimensions: see drawing
ICS connectors: 2 x Female Luer Connectors (Polycarbonate)
ECS connectors: 2 x Female Luer Connectors (Polycarbonate)
Potting material: Polyurethane

Module

Number of fibers: 4000 ± 100
Package density: ~ 46 %
Active fiber length: 100 ± 3 mm
Inner surface area: 2510 ± 80 cm²
Outer surface area: 3520 ± 110 cm²
Intra capillary volume: ~ 15 ml
Extra capillary volume: ~ 28 ml
Max. operating pressure: 1.5 bar

Miscellaneous

Quality control: 100 % Integrity tested (housing + fiber)
Packaging: On customer request
Gamma Irradiation (25-40kGy): On customer request

Cautions

Storing: dry, between 5 – 40 °C
Operating Temperature: 5 – 40 °C
Recommended operation time: max. 30 days
Application: single use, not for re-sterilization

Copyright © 2024 Alpha Plan GmbH. All rights reserved.